

Pipe repair with cement mortar

The many types of stress, to which underground potable water pipes, whether cast iron, steel or asbestos-cement, are subjected, make regular inspection and continuous maintenance essential.

However even optimum maintenance cannot prevent corrosion, incrustation and pitting. This result in impurities in the water and losses of capacity, increasing the risk of pipe breakage as well as operating costs. These problems can be eliminated by laying new pipe – however this solution is usually expensive and requires at least a great deal of space and time.

Another versatile, efficient and economical, state-of-the-art method of pipe repair used worldwide is to line the pipe with cement-mortar using centrifugal force.

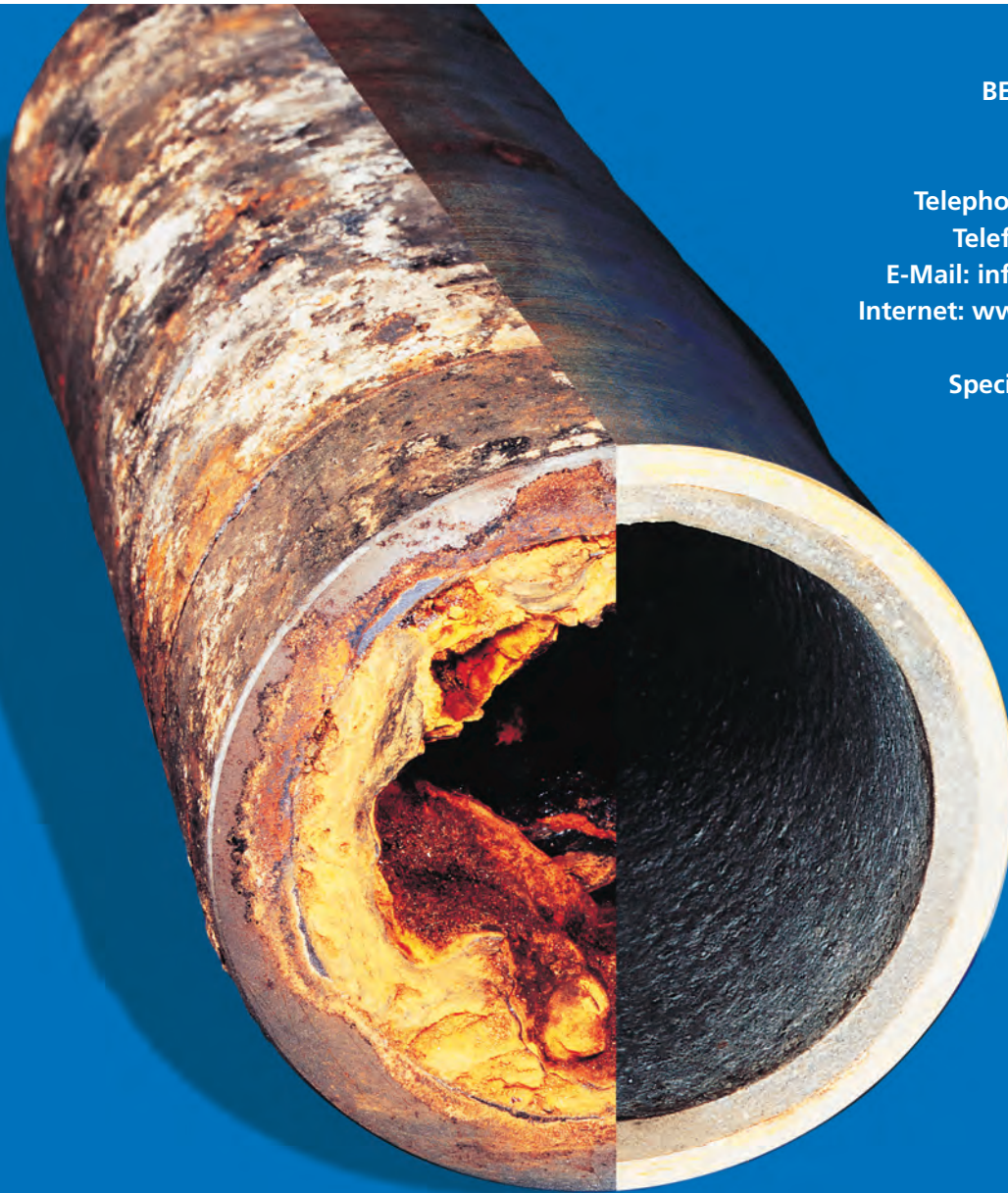
Berkel Rohrtechnik GmbH has a complete range of machines for lining pipes with cement mortar from nominal widths of 80 mm up to major lines with diameters of several meters.

Special techniques also make it possible for us to line pipe sections with lengths up to 5000 m and more in major pipelines. We can also reline sections with steep gradients, vertical shafts, tanks and other difficult sections.

Advantages of centrifugal lining process

- Economical repair procedure with convincing advantages in comparison to relaying
- Versatile application, virtually independent of nominal width or length of pipe section
- Minimum excavation work, less obstructions for traffic
- High daily performance, reduces line non-availability time
- Maintenance-free line, prevents new incrustation
- Active and passive interior corrosion protection
- Increases capacity by improving hydraulic features
- Microbiologically safe





Before repair

After repair

BERKEL Rohrtechnik GmbH
Franzstraße 25
D-45968 Gladbeck
Telephone: +49 2043 / 4 01 17 78
Telefax: +49 2043 / 3 78 23 16
E-Mail: info@berkel-rohrtechnik.de
Internet: www.berkel-rohrtechnik.de

Specialized company certified
by DVGW in Group R4

REHABILITATION OF PRESSURE PIPES

Cement Mortar Lining for Water Pipes

(in compliance with
DVGW Worksheet W343)

